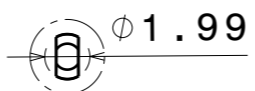
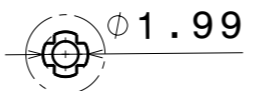


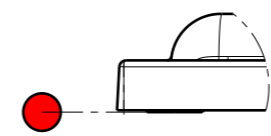
Bottom view  
Scale: 3:2



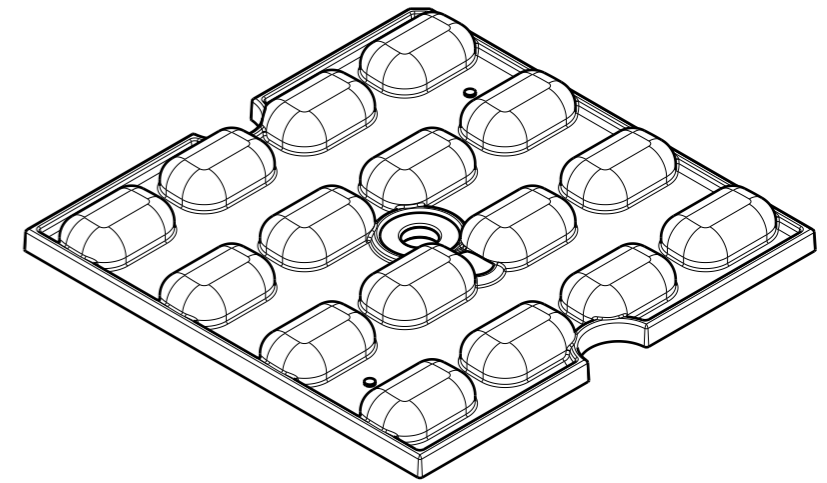
Detail A  
Scale: 3:1



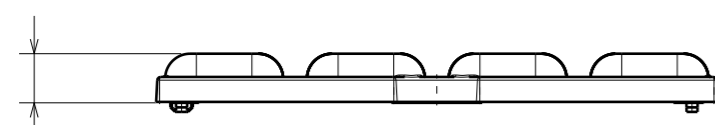
Detail B  
Scale: 3:1



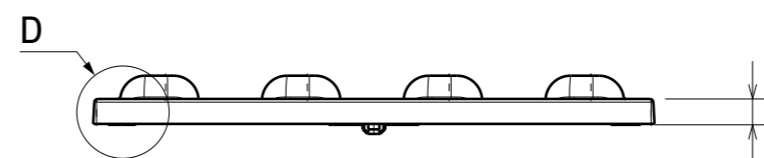
Detail D  
Scale: 3:1



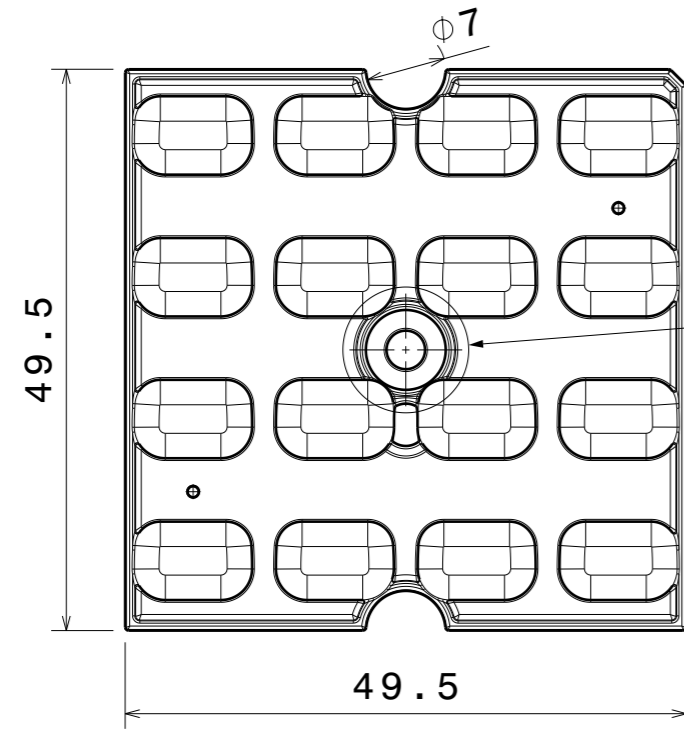
Isometric view  
Scale: 3:2



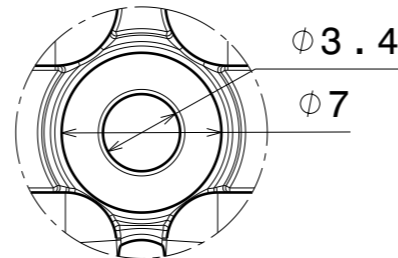
Front view  
Scale: 3:2



Left view  
Scale: 3:2



Top view  
Scale: 3:2



Detail C  
Scale: 3:1

**GENERAL MOULDING TOLERANCES**

Dimension [mm]	PMMA / PC
>0-6	± 0.2
>6-22	± 0.25
>22-40	± 0.30
>40-90	± 0.44
>90-160	± 0.60
>160-200	± 0.70
>200-315	± 1.1
>315	± 1.3

PART	TYPE	MATERIAL	COLOR / COATING
C16414_STRADELLA-16-T1-A-PC	Lens	PC	clear

MECHANICAL DRAWING	
PRODUCT	<b>STRADELLA</b>
Plastic molding general tolerances are based on DIN 16901-130 and applies if not otherwise shown in drawing. Silicone molding general tolerances are based on ISO 3302-1 Class M3 and applies if not otherwise shown in the drawing.	FIRST ANGLE PROJECTION: 
SCALE 3:2	WEIGHT 5,83 g

**LEDiL**®

This drawing is the property of LEDiL Oy. It may not be reproduced, copied or communicated without a written agreement with LEDiL Oy.

A3 SHEET 1/1

- Notes**
- PCB or heatsink level.
  - LED location.
  - Ensure LED fitting from a product specific 3D model available from [www.ledil.com](http://www.ledil.com).
  - See installation details in page 2.